



★
DAVID DIKE

FINE ART, L.L.C.
SINCE 1986

Jessie Davis
(Am. 1887 - 1969)

Still Life

oil on board 24 ½ x 20

signed lower left: Jessie Davis

\$2,500



Olin Herman Travis

(Am. 1888 - 1975)

Untitled, River Scene

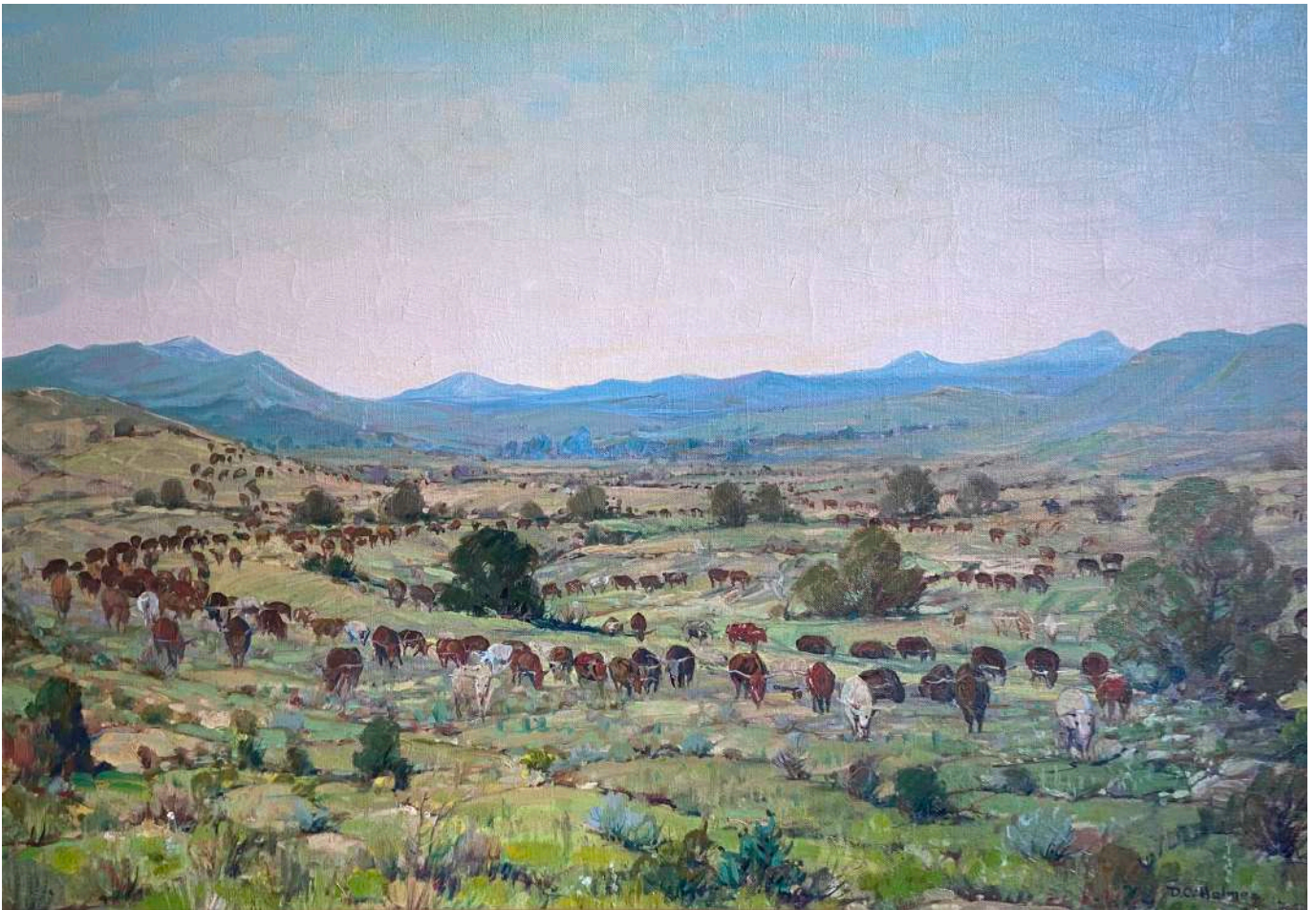
oil on board 8 x 9 7/8

signed lower left: Olin Herman Travis

\$1,200



Everett Spruce
(Am. 1908 - 2002)
Sand Piper
oil on board 25 x 30
signed lower right: Spruce
\$30,000



Dwight C. Holmes (SOLD)

(Am. 1900 - 1986)

Longhorn Cattle Drive – Big Bend Texas, 1947

oil on canvas 21 x 30

signed lower right: D.C. Holmes



Harold A. Roney

(Am. 1899 - 1986)

Hills and Farm

oil on canvas 25 x 30

signed lower right: Harold A. Roney

\$8,500



John Enser

(Am. 1898 - 1968)

The Old Veteran

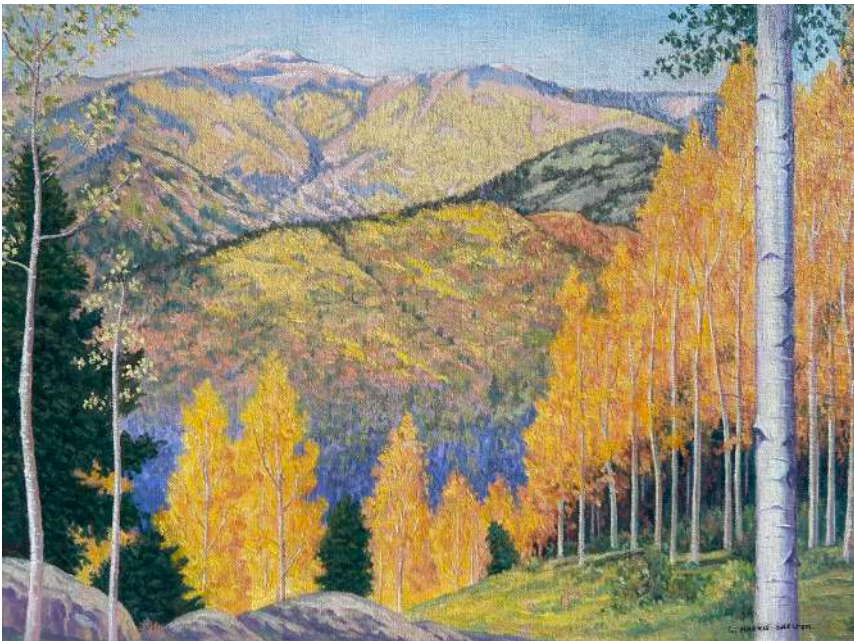
oil on canvas 24 x 30

signed lower right: John F. Enser

\$4,500



Jessie Davis
 (Am. 1887 - 1969)
Untitled
 oil on board 12 x 9
 signed lower left: Jessie Davis
\$1,500



George Harris Shelton
 (Am. 1896 - 1976)
Ruidoso, New Mexico
 oil on canvasboard 12 x 16
 signed lower right: G. Harris Shelton
\$8,500

Illustrated in the book *Early El Paso Artists* by Carol Ann Price on page 89.



Paul Turner
 (Am. 1904 - 1993)
Bluebonnet Landscape
 oil on canvas 24 x 36
 signed lower right: Paul Turner
\$2,500



Ed Bearden (ON HOLD)
 (Am. 1919 - 1980)
Washington Gulch
 watercolor on paper 10 x 17 ½
 signed lower right: Ed Bearden
\$1,500



William Slaughter
 (Am. 1923 - 2003)
Winter Landscape
 oil on canvas 23 x 35
\$8,500



Arthur Earl Haddock
 (Am. 1895 - 1980)
Grand Canyon, Arizona 1926
 oil on board 9.5 x 12
 signed lower left: AEH, Grand
 Canyon Ariz. Nov 24th 1926
\$2,500



Robert Wood
 (Am. 1889 - 1979)
Cactus Landscape
 oil on canvas 12 x 16
\$6,500



Jennie Haddad
 (Am. 1906 - 1996)
Going West
 oil on canvas 20 x 30
 signed lower left: Jennie Haddad
\$2,500



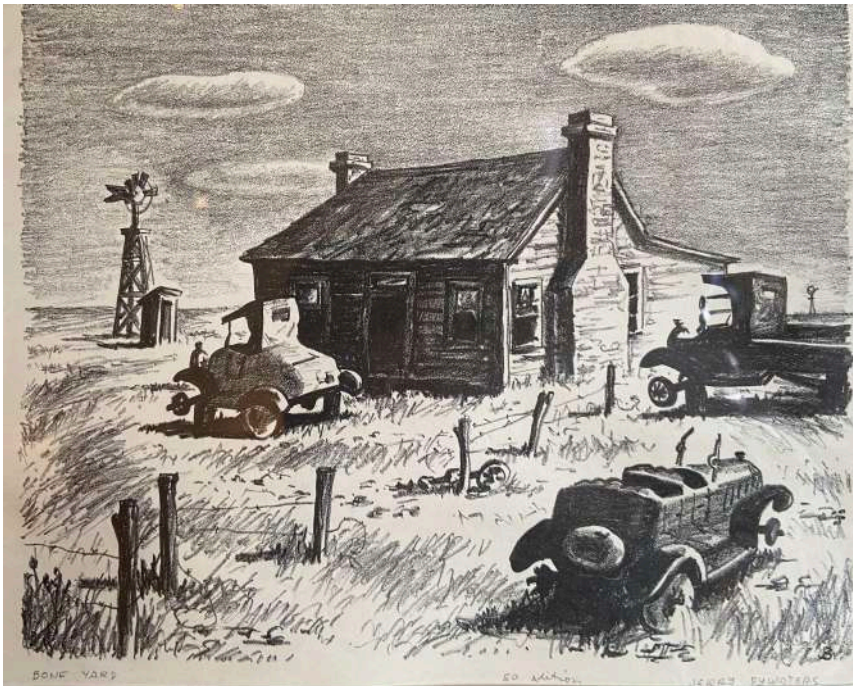
Jennie Haddad
 (Am. 1906 - 1996)
Untitled
 oil on board 18 x 24
 Estate stamped on reverse
\$1,500



Jennie Haddad
(Am. 1906 - 1996)
After the Rain, 1958
oil on canvas 38 x 48
signed on right: Jennie Haddad
\$15,000



Jennie Haddad
(Am. 1906 - 1996)
Untitled
oil on canvas 50 x 38
Estate Stamped on verso
\$15,000



Jerry Bywaters
(Am. 1906 - 1989)

Bone Yard

lithograph 7 ½ x 9
signed across bottom: Bone Yard, 50
edition, Jerry Bywaters
\$2,500



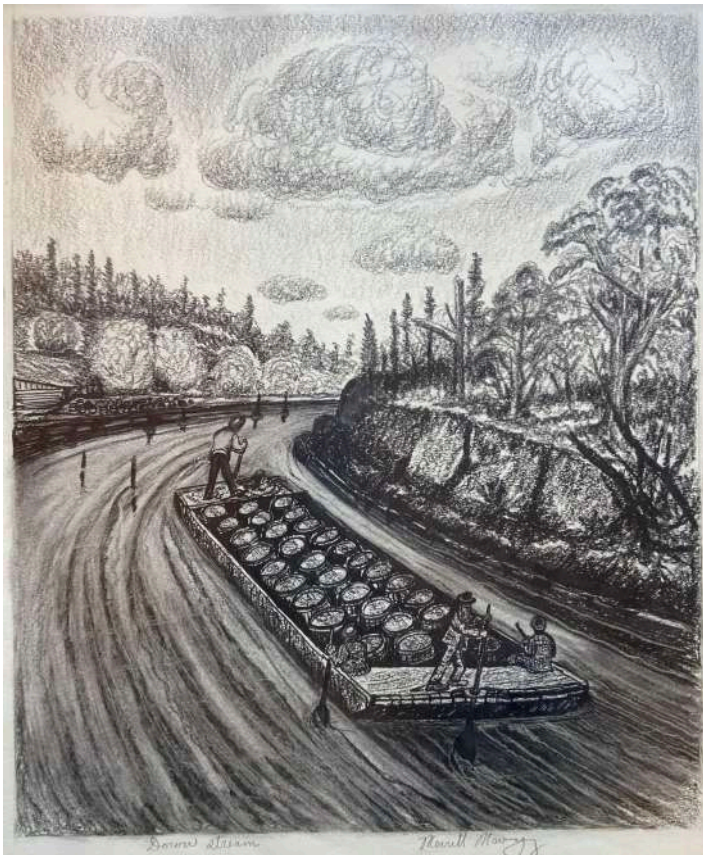
Reveau Bassett
(Am. 1897 - 1981)

Eleven O'Clock Flight

lithograph 10 ½ x 13 ½
signed lower right: Reveau Bassett
\$1,200



Merritt Mauzey
 (Am. 1897 - 1973)
To Other Lands
 charcoal and ink on paper
 12 $\frac{3}{4}$ x 10 $\frac{1}{2}$
 signed across bottom: To Other Lands
 Merritt Mauzey
\$750



Merritt Mauzey
 (Am. 1897 - 1973)
Down Stream
 charcoal and ink on paper
 12 $\frac{3}{4}$ x 10 $\frac{1}{2}$
 signed across bottom: Down Stream,
 Merritt Mauzey
\$750



Otis Dozier

(Am. 1904 - 1987)

Saddling Wild Horse, 1940, Ed. 30

lithograph 13 x 14

signed across bottom: Saddling Wild Horse, Otis Dozier

\$750



Barbara Maples

(Am. 1912 - 1999)

Sea Mood

lithograph, Ed. 15

8 3/4 x 11 3/4

signed across bottom: Sea Mood, Ed. 15
Barbara Maples

\$750



Kathleen Blackshear

(Am. 1897 - 1988)

Giraffe

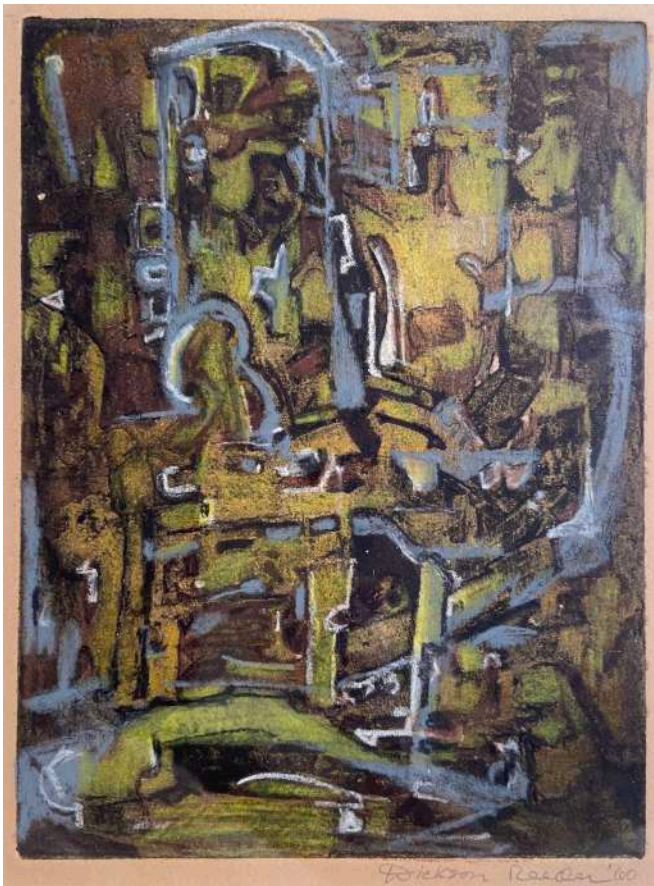
gouache on paper

22 ¼ x 29

signed lower right:

Blackshear

\$8,500



Dickson Reeder

(Am. 1912 - 1970)

Untitled, 1960

pastel on black intaglio print

9 ¼ x 7

signed lower right:

Dickson Reeder '60

\$750



Anne Weary (ON HOLD)

(Am. 1923 - 2003)

Buttercups

pastel on paper 7 ½ x 9 ¼

signed lower right: AC Weary

\$550