



★
DAVID DIKE

FINE ART, L.L.C.
SINCE 1986

William A. Slaughter

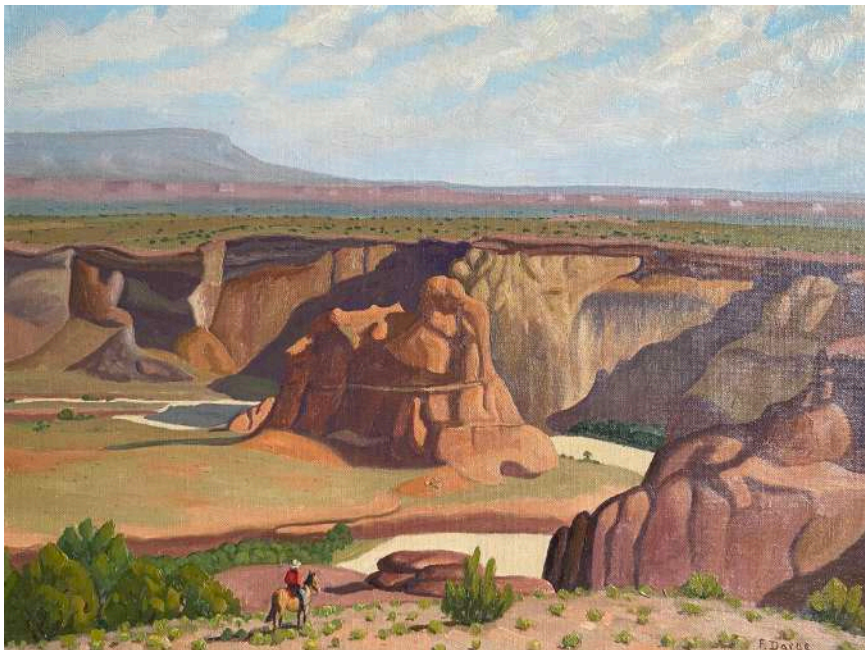
(Am. 1923 - 2003)

Bluebonnet Landscape

oil on canvas 16 x 20

signed lower right: W.A. Slaughter

\$5,000



Fred Darge (SOLD)

(Am. 1900 – 1979)

Junction Butte

oil on canvas 12 x 16

signed lower right: F. Darge

\$3,000



Olin Herman Travis (SOLD)

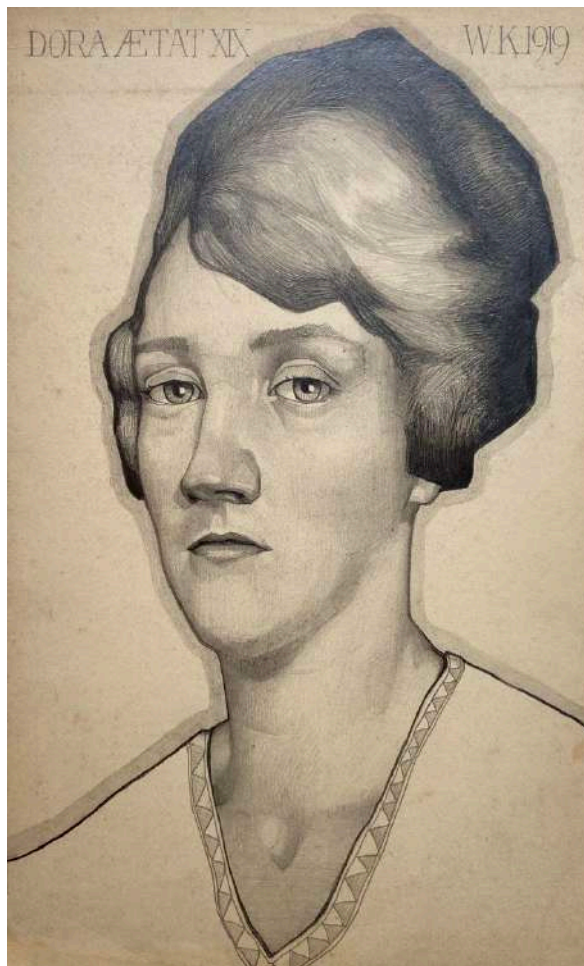
(Am. 1888 – 1975)

Landscape

lithograph 7 ¾ x 11 ¼

signed lower left: Original Litho by
Olin Travis 1 of 25

\$250



William Langdon Kihn

(Am. 1898 – 1957)

Dora AE TAT XIX

pencil on stock paper 14 x 8 ½

signed upper right: W.K. 1919

\$250



Octavio Medellin (SOLD)
 (Am. 1907 - 1999)
Mayan Hummingbird
 color print 4 ¼ x 5 ½
 signed lower right: Octavio
 Medellin, 1975
\$250



Dan Rizzie (SOLD)
 (Am. b. 1951)
*Maquette I for Monumental
 wall-mounted sculpture*
 oil on wood 23 ½ x 20 x 3 ½
 signed verso: Dan Rizzie 1994



Josephine Mahaffey (SOLD)

(Am. 1903 - 1982)

Floral

watercolor on paper 29 x 23

signed lower right: JM

\$700



Josephine Mahaffey (SOLD)

(Am. 1903 - 1982)

Floral Still Life

oil on canvasboard 30 x 24

signed lower right: JM

\$900



Josephine Mahaffey

(Am. 1903 - 1982)

Mountain House

watercolor on paper 6 x 8 ½

signed lower right: JM

\$300



Anne Weary (SOLD)

(Am. b. 1952)

Longhorn

pastel on paper 6 ½ x 5

signed lower left: AR Weary

\$350



Chester G. Snowden

(Am. 1900 – 1984)

Two Birds

watercolor and graphite on paper

10 $\frac{3}{4}$ x 9 $\frac{1}{4}$

signed lower right: Snowden

\$350



Douglas Clark

(Am. 20th-21st Cent)

Mini Wild Turkey

bronze 3 $\frac{3}{4}$ x 2 x 3 $\frac{1}{2}$

signed on base: DB Clark

\$250



Douglas Clark (On HOLD)
 (Am. 20th-21st Cent)
Horned Pride
 bronze 3 ½ x 6 x 2 ½



Douglas Clark
 (Am. 20th-21st Cent)
Miniature Big Horn
 bronze 3 ¼ x 4 x 1 ¾
 signed on base: Douglas Clark
\$350



Jose Vives Atsara
(Am. 1919 - 2004)
Book: *His Life and His Art*, copy
3079
book
\$250



Emil Bisttram
(Am. 1895 – 1976)
Abstraction
pencil on paper 4 $\frac{3}{4}$ x 4
signed lower right: Bisttram
\$850



Flora Blanc Reeder (SOLD)

(Am. 1916 – 1995)

Brown and Blue Abstraction

watercolor on paper 14 $\frac{3}{4}$ x 10 $\frac{7}{8}$

signed lower right: Flora Blanc

\$300



Ila McAfee

(Am. 1897 – 1995)

The Four Seasons

print 10 $\frac{1}{2}$ x 16 $\frac{1}{4}$

signed across bottom: *The Four Seasons, Ila McAfee*

\$400